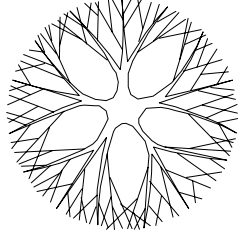
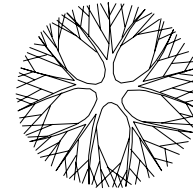


The square footages and room size information are deemed to be reliable but are not guaranteed and should be independently verified. This drawing is for marketing purposes only.

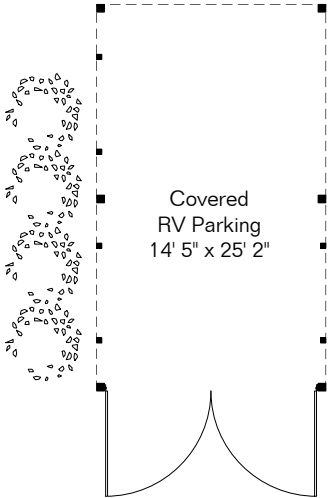
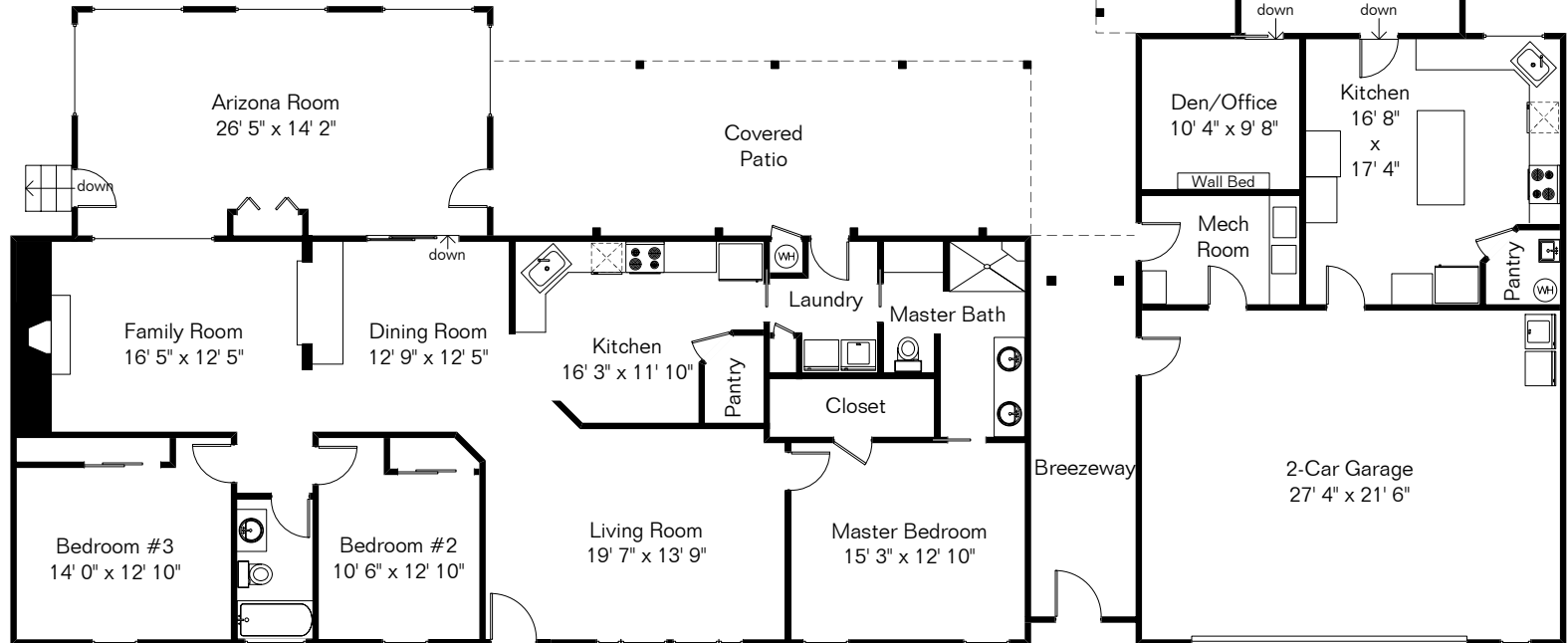
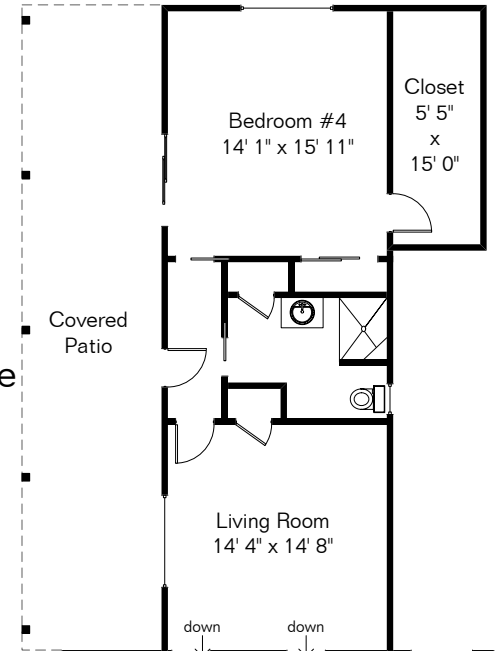
# 6856 N Spring Wagon Dr

Presented by Pam Treece  
 Long Realty Company  
 (520) 275-2664



Main House 2,205 Sq Ft  
 Guest House 1,162 Sq Ft  
 Total Living Area 3,367 Sq Ft  
 Garage 698 Sq Ft  
 Covered RV Parking 375 Sq Ft

Guest House



Site Visit August 2022

0 ft. 6 ft. 10 ft. 20 ft.



Copyright 2022 Floor Plans First! LLC  
 All Rights Reserved.

Floor Plans First!  
 See the Floor Plan First!  
 FloorPlansFirst.com  
 (520) 881-1500